

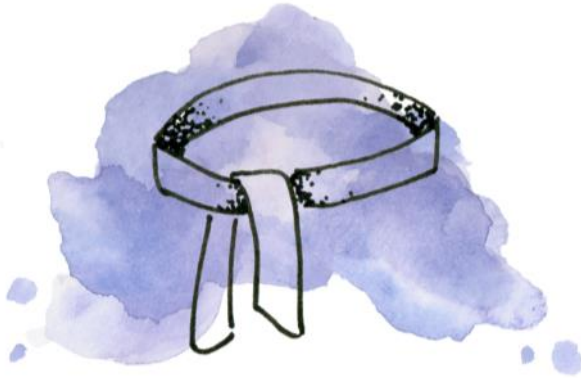


# First Presbyterian Church of Bellingham

Sharing a Living Faith Across Generations

1031 N. Garden St. Bellingham, WA 98225  
360.734.5510 | [fpcbellingham.org](http://fpcbellingham.org)

December 12<sup>th</sup>, 2021



## stay connected this week

Visit [fpcbellingham.org/calendar](http://fpcbellingham.org/calendar) or email [info@fpcbellingham.org](mailto:info@fpcbellingham.org) for links and further information

**TODAY– CAFÉ ZOOM:** Second Sundays in the Fireside Room & on Zoom after the service, approximately 11:15-11:30 | A virtual gathering space much like our usual in person Café Pres! Come as you are, we can chat about the service or just check in with one another!

### **FPC STORY HOUR:**

Mondays on Zoom | 7-8pm | Join us in reading *Charlotte's Web* by E.B. White

### **ADVENT IN PLAIN SIGHT DISCUSSION OPPORTUNITIES:**

Join us as we study *Advent in Plain Sight* by Jill Duffield

**Women's Bible Study** | Tuesdays on Zoom | 9:45-11:15am

**Pastor Doug's Everybody is Welcome Bible Study** | Wednesdays on Zoom | 4:30pm | Discussion, dialogue and deep interaction with God's Word.

# worship guide

Prelude

Welcome & Call to Worship

Advent Reading

*Luke 1:78-79*

Special Music

*Come Thou Long Expected Jesus*

Lighting the Advent Candle

*The Teisher/Wilkinson Family*

Confession and Pardon

Passing of the Peace

Intergenerational Question and Memory Verse

*"Where do you see God's goodness in plain sight?"*

*Romans 1:19*

*Children through 5th grade are dismissed for Godly Play and The Link*

Invitations & Offering

Intro to Scripture

Scripture Reading 1

*Isaiah 11:1-5*

Meditation 1

Scripture Reading 2

*Jeremiah 13:1-11*

Meditation 2

Prayers of Thanksgiving for the Light

Gracious Dismissal

Affirmation of Faith

Worship in Song

Charge and Blessing

*Tammy Rutgers, Organist*

*Fred Hartsook, Host • Cindy Palmer, Liturgist  
Jocelyn Meyer, Music • Kerrie Bauer, Preacher*

# welcome!

## CHILDREN ON SUNDAYS

### Babies & Toddlers:

*The Godly Play Prep room is open to receive toddlers through 3-year-olds five minutes before (9:55am) or anytime during the service.*

- A cry room is available off the balcony to the left of the lectern (south side) for parents to settle babies and continue to listen to the service.
- An unstaffed, equipped nursery, Room 2, is available downstairs for parents to change diapers and settle babies.
- Toddlers through 3 years old are welcome in our staffed Godly Play Prep Rooms 3 & 4. *(Please enter through the door for Room 3.)*

### Godly Play:

Godly Play Mentors are excited to welcome your children to Godly Play!

Children ages preschool - 4th grade will be blessed from congregational worship to wonder about God's story, respond to God through art and play, and care for one another. All mentors are fully vaccinated. Masks required for all ages at all times.

We treasure your children! Thank you for trusting them with us for Godly Play!

### The Link—5th Grade Sunday School

Meets in the Arboretum and is dismissed from worship with Godly Play. Pick up your 5th graders after worship in the Fellowship Hall.

## YOUTH GROUP

### High School youth group:

Sundays from 7:00pm to 8:30pm (Inside and masked)

### Middle School youth group:

Sundays from 11:45am to 1:15pm (Inside and masked)

## THE GARDEN COLLEGE MINISTRY

What was once The INN has become The Garden. The Garden exists to grow the Kingdom by creating agenda-free spaces for community, serving the world with no strings attached and seeking Jesus together.

Learn more at [www.whatisthegarden.org](http://www.whatisthegarden.org) or follow us on Instagram and Facebook @thegardenbellingham.

## PRAY WITH US!

Email

[prayervine@fpcbellingham.org](mailto:prayervine@fpcbellingham.org) to receive weekly prayer requests.

Wednesday Prayer Room | 7AM  
Zoom | Meeting ID: 635 595 092  
Or link in FPC calendar

---

*Phone messages are checked throughout the week. 360.734.5510*

---

### Doug Bunnell, Pastor

[dougb@fpcbellingham.org](mailto:dougb@fpcbellingham.org)

### Kerrie Bauer, Commissioned Pastor to Children & Families

[kerrie@fpcbellingham.org](mailto:kerrie@fpcbellingham.org)

### Fred Hartsook,

#### The Garden Director

[fred@thegardenbellingham.org](mailto:fred@thegardenbellingham.org)

### Thomas Clinkenbeard, Youth & Family Director

[thomasc@fpcbellingham.org](mailto:thomasc@fpcbellingham.org)

### Alissa McSharry,

#### Connections Coordinator

[info@fpcbellingham.org](mailto:info@fpcbellingham.org)

### Jocelyn Meyer,

#### Worship Director

[worship@fpcbellingham.org](mailto:worship@fpcbellingham.org)

### Meg Matson,

#### Toddler Coordinator

[megm@fpcbellingham.org](mailto:megm@fpcbellingham.org)

### Emily Bajema, Creative Communications Director

[creative@fpcbellingham.org](mailto:creative@fpcbellingham.org)

### Nicki Lang, Seminary Intern & Cultivator of Sacred Space

[nickil@fpcbellingham.org](mailto:nickil@fpcbellingham.org)

## MORE WAYS TO GET INVOLVED:

### FOOD FOR THE HUNGRY SPONSORSHIP:

Downstairs after the service | Sign up to be a sponsor or learn more about our partnership with Food for the Hungry in Chitul, Guatemala.

### FPC CHOIR:

If you're interested in joining choir, please email [worship@fpcbellingham.org](mailto:worship@fpcbellingham.org).

### ADVENT AT FPC:

Visit [fpcbellingham.org/advent2021](http://fpcbellingham.org/advent2021) for ways to give, printables, music and Christmas stories!

## Advent

2021

For what can be known about God  
is plain to them, because  
God has shown it to them.

ROMANS 1:19



**MISSION MOMENT:** Praise God for the generous response to the appeal for help for the people of Chitul Guatemala, and for the orphans who will be supported by church members. **Pray** for decisions to be made in the village regarding the choice of children most in need and the use of resources provided. Pray also for Jesus to be seen and welcomed with praise as lives are changed by this work in their village.



**FPC Bellingham**

Sharing a Living Faith Across Generations